

NAME:

DATE:

# Harry Potter Characters WORD FIND

T S N A G I N I A T F V O T G F T F Y J T A A  
 Q E J O W P L X F H I W N Q K Y B B O D K W L  
 Y V N U T S A M T T Y X Q Z T H P N A B M O A  
 B E R H G J X R Y E L S A E W Y N N I G Z U S  
 Y R C A H S G M E F F S I R I U S B L A C K T  
 O U R E M U S L U P I N T W F V T C M K U T O  
 F S X D C H O C H A N G I W D E H S Z J X H R  
 L S P G I W E R G I T T E P R E T E P E Q P M  
 A N Z P V H B S O R T I N G H A T R F S Y B O  
 M A A I T S B N Q M A X G P D E Q X N V U Z O  
 O P L U N A L O V E G O O D O C P X K G T O D  
 C E H G G A H D I R G A H S U E B U R A Q I Y  
 A M V R C Y C L D P E U K U C H W F C Q B N L  
 R E R R O N W E A S L E Y L S E J Y B K I L Z  
 D E L R C C S V E E R E T T O P Y R R A H Y S  
 M A E Z W I X M H L O R D V O L D E M O R T Q

ALASTOR MOODY

REMUS LUPIN

LUNA LOVEGOOD

DOBBY

HARRY POTTER

SORTING HAT

SEVERUS SNAPE

PETER PETTIGREW

LORD VOLDEMORT

CHO CHANG

DRACO MALFOY

RON WEASLEY

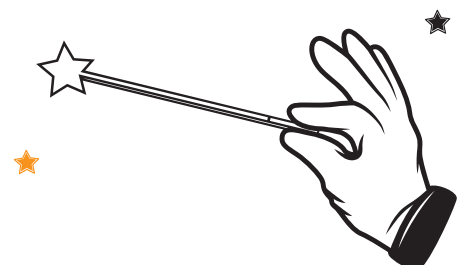
RUBEUS HAGRID

SIRIUS BLACK

NAGINI

HEDWIG

GINNY WEASLEY



NAME: \_\_\_\_\_

DATE: \_\_\_\_\_

# Harry Potter Characters WORD FIND



ALASTOR MOODY

REMUS LUPIN

LUNA LOVEGOOD

DOBBY

HARRY POTTER

SORTING HAT

SEVERUS SNAPE

PETER PETTIGREW

LORD VOLDEMORT

CHO CHANG

DRACO MALFOY

RON WEASLEY

RUBEUS HAGRID

SIRIUS BLACK

NAGINI

HEDWIG

GINNY WEASLEY

